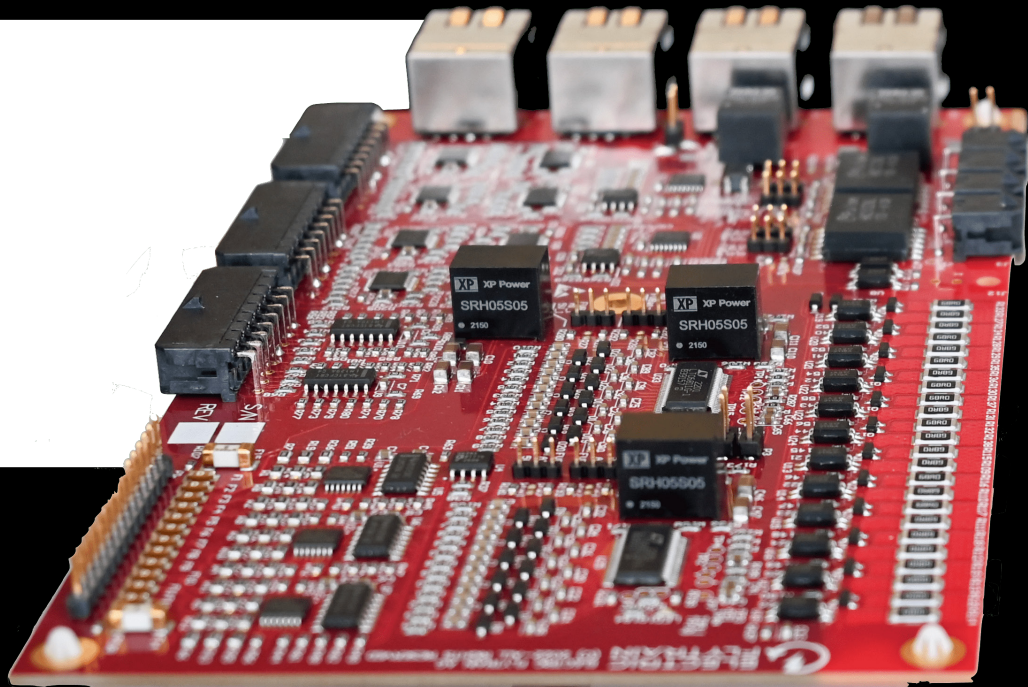




EFT-BMS-1x

The EFT-BMS-1x (Battery Management System) is designed as a modular BMS platform that can be quickly adapted to monitor and control any battery pack.



Turn-Key	It includes all relevant monitoring functions as well as control functionality.
Configuration	An individual BMS Slave Unit is configured for up to 12 cells in series, but it can be daisy chained to up to 192 cells in series. This allows to monitor battery packs from 40V up to 800V.
BMS Sensors	Voltage, Current, 12 Temperature Sensors per Module
Control Functions	Cell Balancing, SoH, SoC, and SoP
Communication Interfaces	CAN2.0b isoSPI (Slave to Slave)
Scalability	Daisy Chain of BMS Slave Modules 12S - 192S (40V - 800V)
Special Feature Options	Full digital redundancy Analog evaluation of Undervoltage and Overtemperature

The EFT-BMS-1x includes all relevant monitoring functions (Voltage, Current, Temperature) to allow safe operation.

The management system enables precise processing of battery data to derive accurate State of Health, State of Charge, State of Power.

The EFT-BMS-1x includes simplified interfaces and scalability to different voltage levels.